

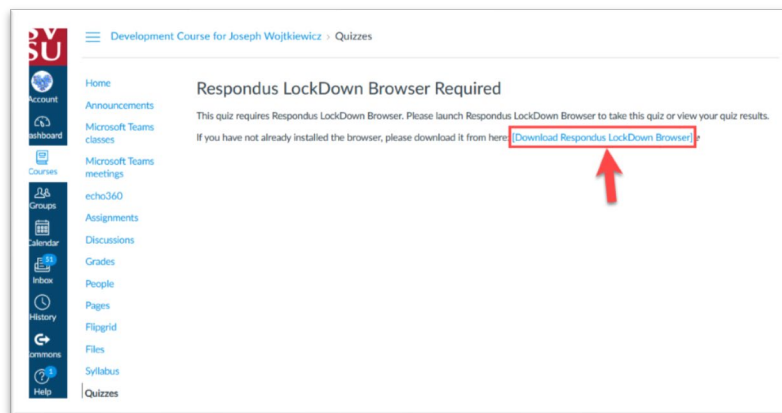
Respondus LockDown Browser: STUDENT GUIDE

This guide provides steps for the student on how to download, install, and open the Respondus Lockdown Browser.

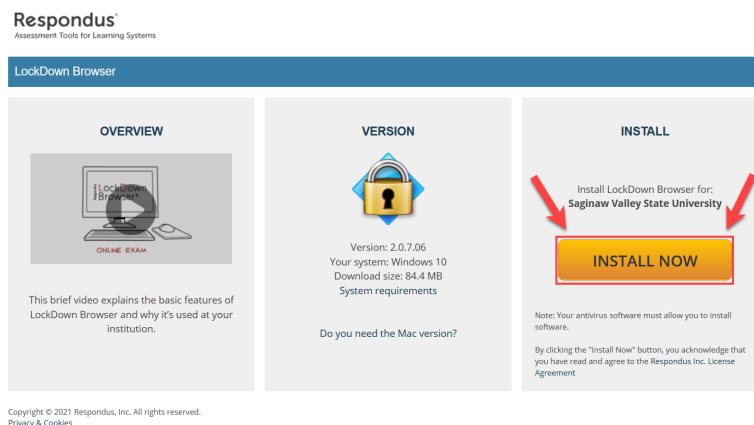
1. Open your course from the Canvas Dashboard.
2. Open the quiz that requires LockDown Browser, this could be a Practice quiz or actual quiz.

3. Click Take the Quiz 
4. Next, you will need to install LockDown Browser (sample image below).


NOTE: If it is already installed skip this step and launch LockDown Browser on your computer.



5. On the download page, click Install Now. The application will download to your computer.
6. When the download is complete install the Lockdown Browser application to your computer. This could take several minutes.



7. After LockDown Browser is installed, it is recommended to restart your computer.
8. After rebooting your computer, open the Lockdown Browser from desktop icon.

9. Open your course, go to your quiz and click 

NOTE: Your instructor should have a practice test available for you to use with the Lockdown Browser. Be sure to complete the practice test before attempting the graded test to ensure the browser is working properly on your computer.